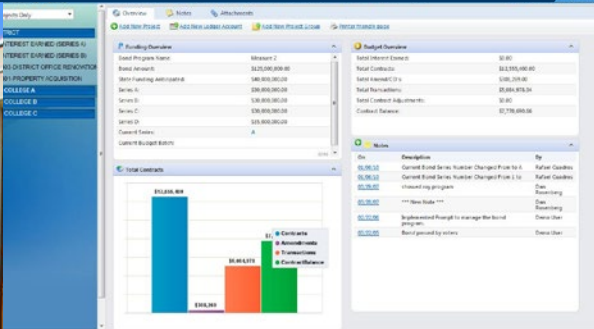
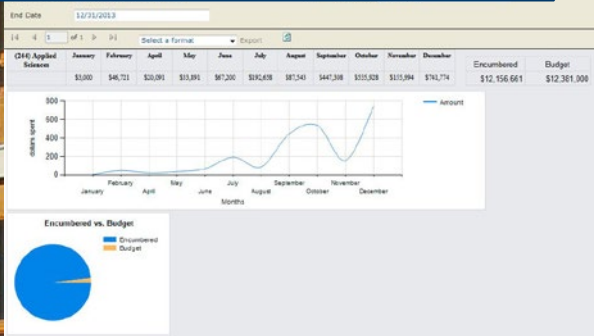


DASHBOARD



CASH-FLOW ANALYSIS



RFI MANAGEMENT/TRACKING

The RFI management/tracking screenshot shows a table with the following columns: RFI Number, Revisions, Flag, Attach, Workflow Position, Status, Created By, RFI Created, Date Required, Question/Response, and Date Closed. The table contains several rows of data, with some rows highlighted in red and green. The 'Question/Response' column contains text such as 'This is a new RFI for testing...' and 'This is another RFI for testing and demo on the RFI tool...'.

Program Management Software

For Bond and Capital Improvement Programs

Features

- » Over 30 Built-in Reports including Cash Flow Analysis
- » Tracks and reports multiple funding sources
- » Real-time information and reporting
- » Project Schedule creation and management (P6 Primavera)
- » Project Document storage and management
- » RFI Manager with project team communication tools and controls
- » Change Order management controls
- » Document delivery tracking and response reminders

Benefits

- » Web-based system
- » User friendly with control and reminder features
- » Interfaces with district accounting systems
- » Provides project work flow efficiencies
- » Communicates with other project professionals
- » Customizable reports and deliverables for stakeholders
- » Security encryption coding and staff hierarchy controls
- » Prop. 39 rules built-in for year-end auditing
- » Time-tested and approved by state auditing firms
- » Full time IT support specialists
- » Negotiable contract terms